

How to Load Pins into a Replicator Strip

1. Remove the two screws (arrows in Figure 1) from the top cover of the Replicator Strip

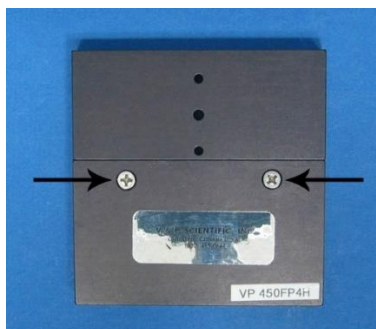


Figure 1

2. Remove top cover to allow access to the pin holes. Pins can then be loaded in as shown in Figure 3

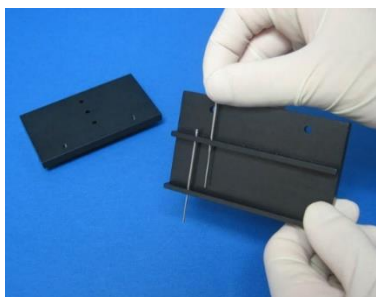


Figure 2

3. Replace the top cover and screws to have a fully assembled Replicator Strip

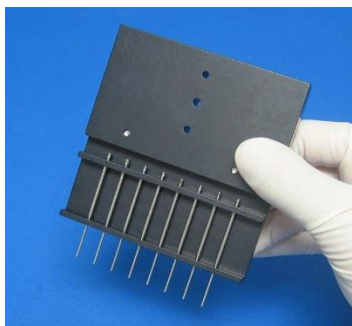


Figure 3