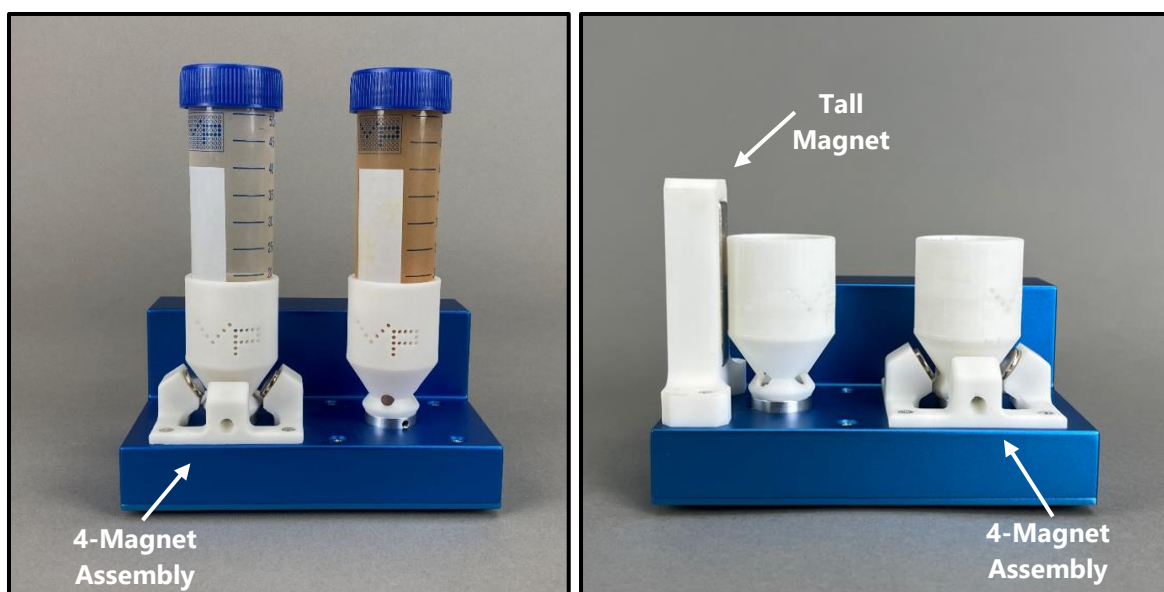


OPERATING INSTRUCTIONS FOR **MagWash® for Two 50ml SpinVessel® Tubes:** **VP 418MW2-2-50-L-CC** **VP 418MW2-2-50HL-CC**

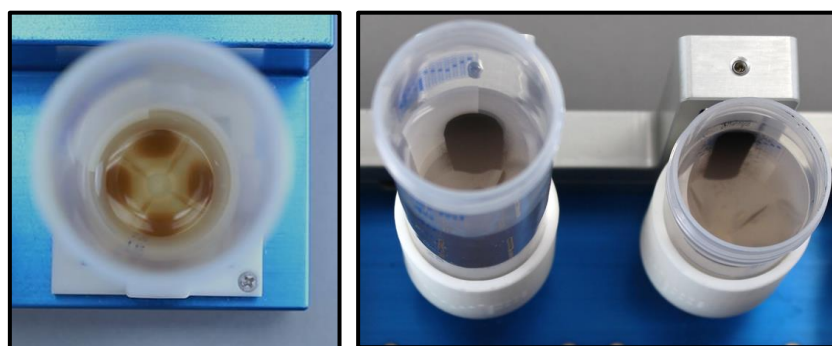
US Patent #11,623,188

European (BE, FR, DE, NL, CH, SE, & UK) Patent #3887049



VP 418MW2-2-50-L-CC (left) has one 4-magnet assembly for collecting magnetic beads from a low volume in one tube. The other tube position is non-magnetic.

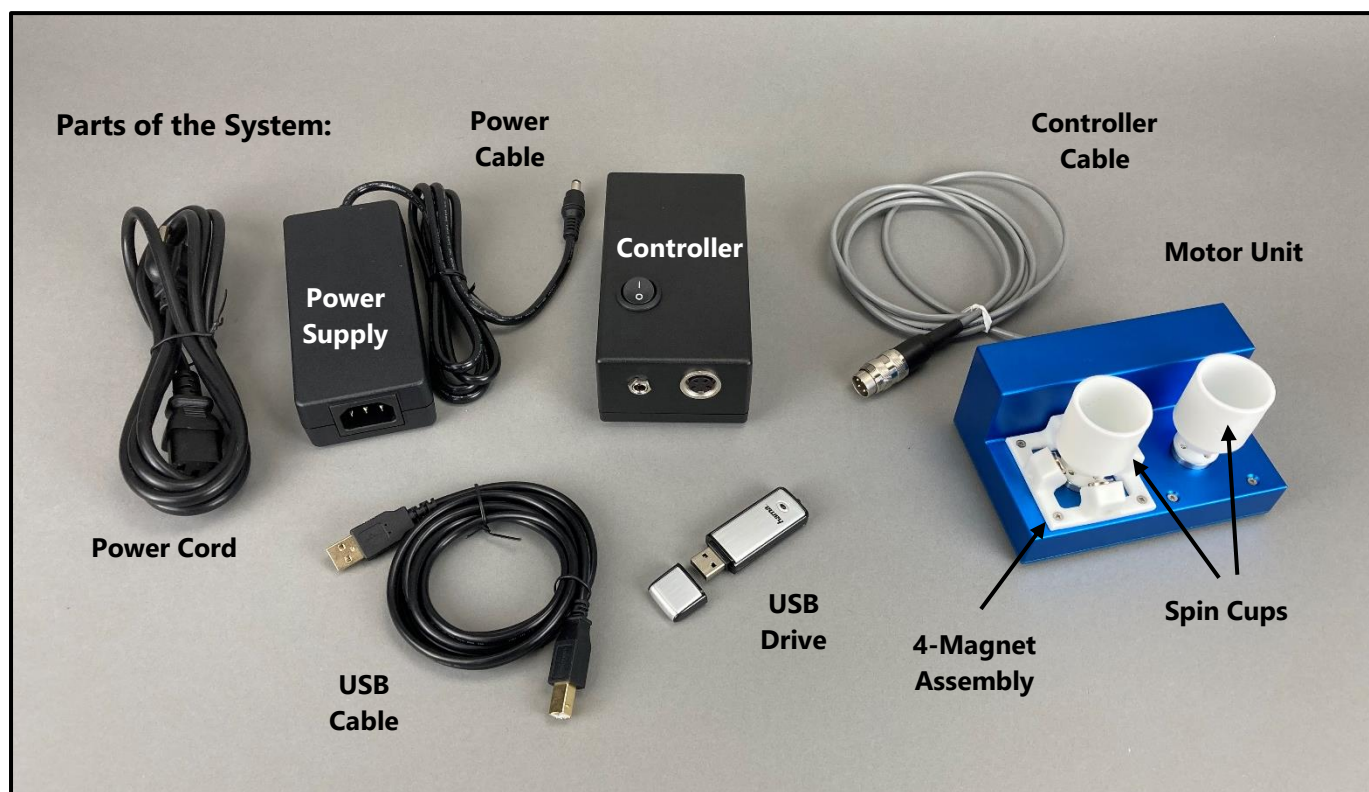
VP 418MW2-2-50HL-CC (right) has one tall magnet for collecting magnetic beads from a full tube. The other tube position has the 4-magnet assembly for collecting magnetic beads from a low volume.



Magnetic Bead Collection: 4-magnet assembly (left) and tall magnet (right)
with a 50 ml and 25 ml SpinVessel

SET-UP

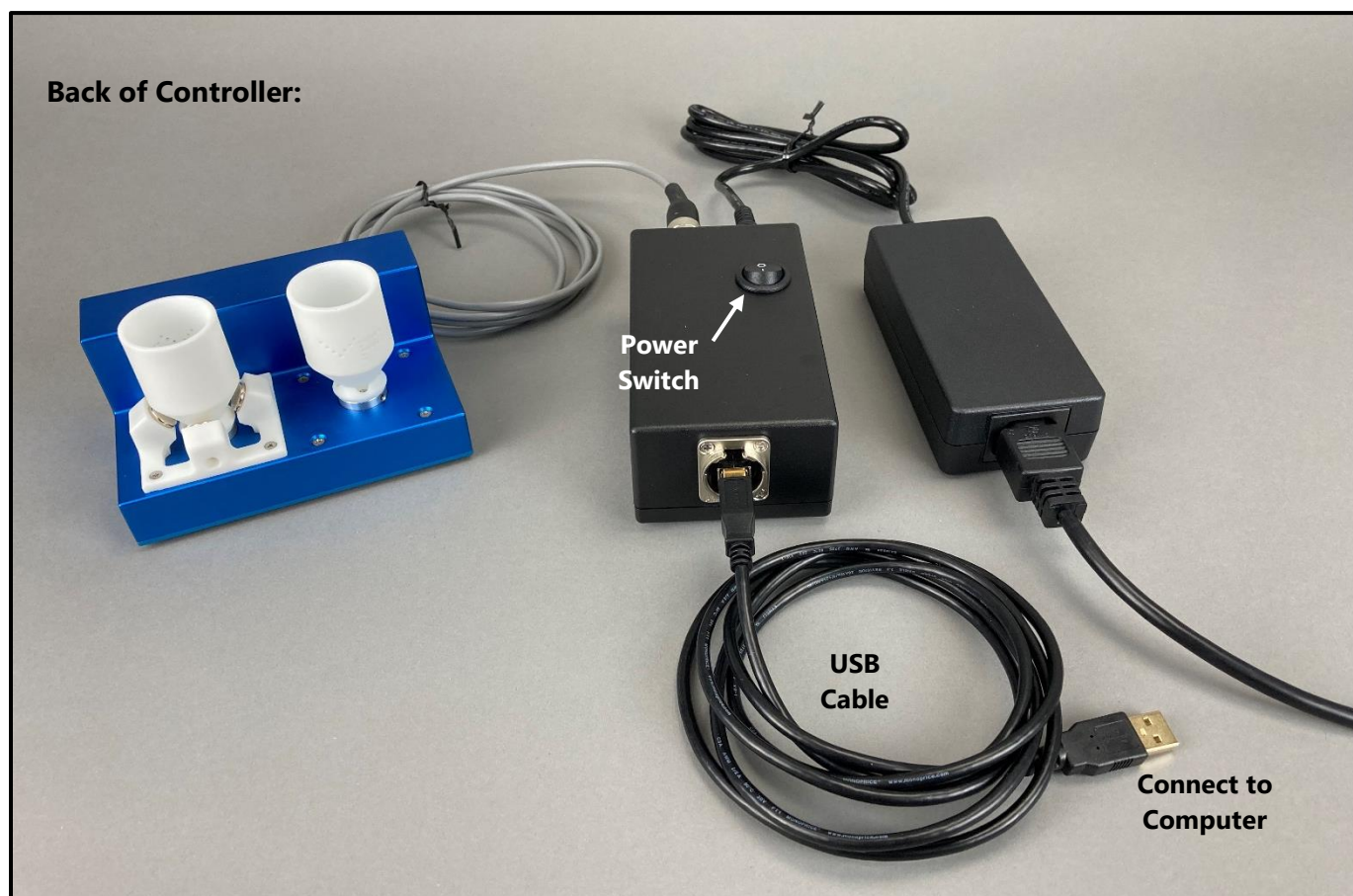
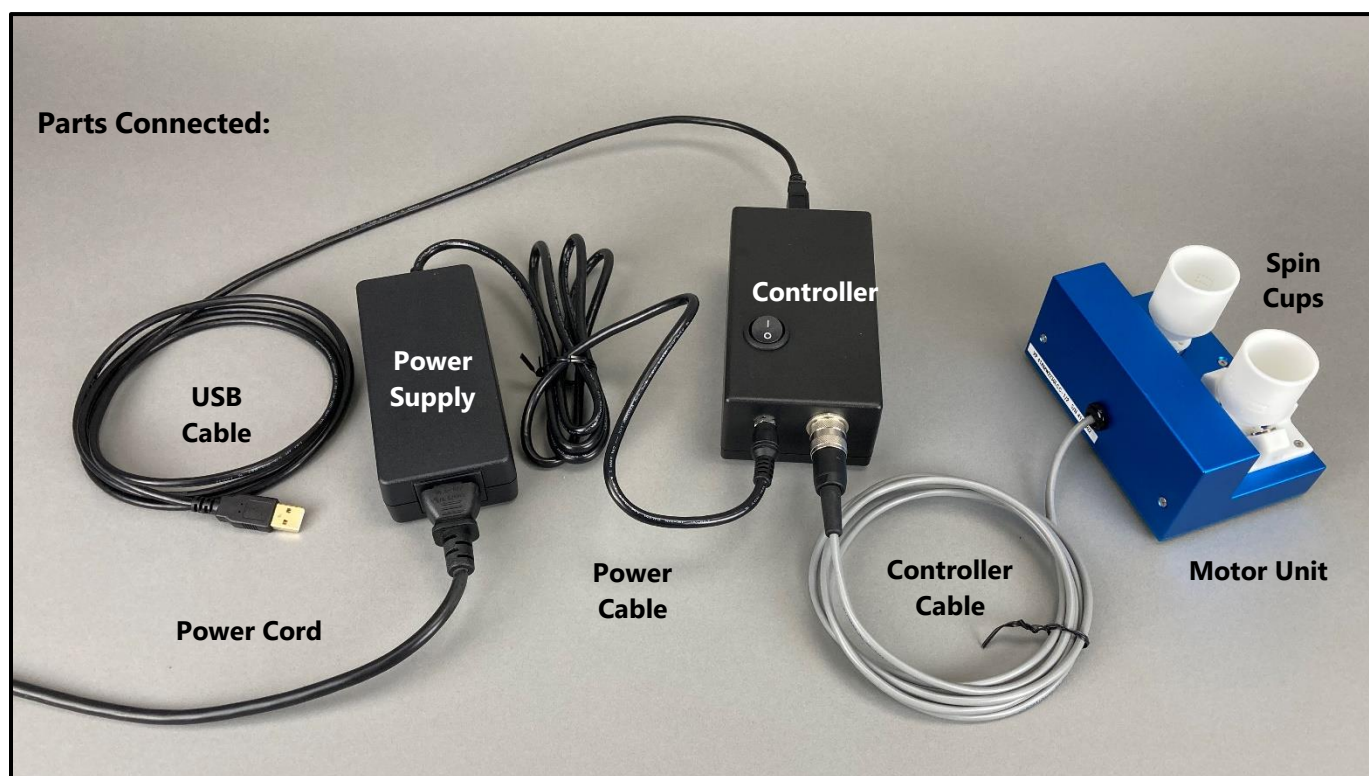
CONNECTING PARTS OF THE SpinVessel® SYSTEM



MagWash® System includes Motor Unit, Spin Cups, Controller, Power Supply, USB cable and USB drive with control software.

1. Place the Motor Unit on a sturdy lab bench, table, or robotic workstation. Note that Z height with tube is 148mm (tube cap and rubber feet not included).
2. **Warning: Do not use the Spin Cups as a handle to move the SpinVessel. Hold the Motor Unit with both hands to position the SpinVessel where desired.**
3. Since the Controller Cable is 6 feet long, the Controller and computer can be placed at a distance from the Motor Unit.
4. Connect Power Cord from Power Supply to an outlet.
5. Connect Power Cable from Power Supply to Controller.
Warning: Do not plug the Controller in while the power is on. Ensure that the Power Switch is in the off position ("0" is down). Always have the Controller plugged in before powering up.
6. Connect Controller Cable from the Motor Unit to the Controller.
7. Connect the USB Cable from the Controller to the computer.

8. Place one or two VP 830SV-50 SpinVessel® tubes into the Spin Cups. Ensure that the SpinVessel® is seated securely within the Spin Cups.



OPERATION

POWERING UP THE SpinVessel® SYSTEM

The Power Switch (I/O) is located on the top of the Controller. To power up the Controller, depress the "I" of the switch.

OPERATING THE SpinVessel® With COMPUTER CONTROL

The SpinVessel® Models with "-CC" in the part number are controlled using a computer. In this configuration, the control unit does not have a manual Touch Screen Controller. The Controller for the computer controllable SpinVessel® is connected by a USB communication cable to a computer. The Controller accepts simple ASCII commands to set the speed of the rotations, the number of rotations (including fractions of a rotation), duration of pause before reversing direction and degree of ramping to speed set.

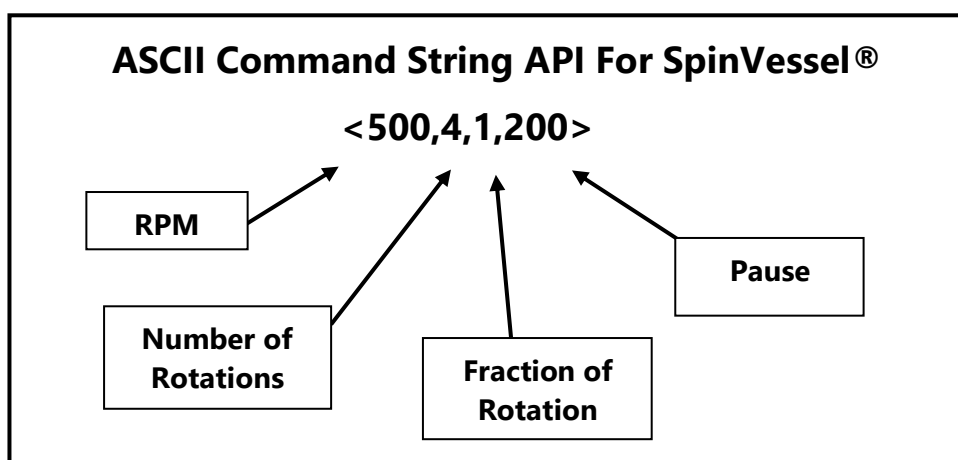
Software details

1. The SpinVessel® Controller uses an internal CH340G USB to Serial Converter (set to 9600,8,N,1) which will require driver software. Windows may already have the needed USB driver software installed. If not, download the "CH340 USB DRIVER" from the provided USB flash drive and run "CH341SER.exe" to install it (Windows typically auto-installs once downloaded). If your company policy does not allow the use of the provided USB stick, this driver is also available for download from the internet (contact your IT department for assistance if necessary).
2. The basic command language for this computer-to-stirrer communication is ASCII.
3. Commands can be sent from the computer using a standard terminal program like HyperTerminal or Realterm. Or, if needed, download the V&P Scientific Serial Terminal program from the provided USB flash drive. If your company policy does not allow the use of the USB stick provided, we suggest asking your IT department for a recommendation.
4. Alternatively, the ASCII commands can be sent by an automated liquid handler's software to control the SpinVessel®. Since there are many different automated liquid handlers available, please contact a technical representative from the company that makes the liquid handler.

Connecting and sending commands

1. Set up the system as described in the Set-Up section of the SpinVessel® Technote with the USB cable connected to the computer to be used.
2. Open the Serial Terminal program (V&P Scientific version or other).
3. Turn on the SpinVessel® instrument as described.

4. Select the appropriate COM port and click CONNECT to establish a line of communication between the instrument and the computer.
5. Create ASCII command strings as outlined in the diagram shown below to control the instrument with the following parameters:
 - a. Speed of rotation in revolutions per minute (RPM). Do not exceed 650 RPM
 - b. Number of rotations before reversing direction.
 - c. Fraction of a rotation (input 0-9 for fractions of a rotation).
 - d. Pause, in milliseconds, before reversing direction.
6. Hit ENTER to send the command and start the rotation of the SpinVessel® instrument.
7. To stop, type <0> and hit ENTER.



USING the 25 or 50 ml SpinVessel® SYSTEM

The optimal stirring mode is dependent upon the application and needs to be empirically determined.

Factors to consider in determining optimal 25 or 50 mL SpinVessel operation are the density of the particulates, their size and shape, as well as the volume and viscosity of the liquid. Start with 500 RPM, 4.1 rotations and a 200 millisecond pause before reversing direction, then test to determine the appropriate RPMs and number of rotations for the particulate's density, fragility, and solution viscosity. We have found that smaller circumference SpinVessels® require higher RPMs than larger circumference SpinVessels, because the critical factor is the linear speed generated at the circumference not the RPMs. See page 501 of our [SLAS Technology paper](#) for a full discussion of this phenomenon.

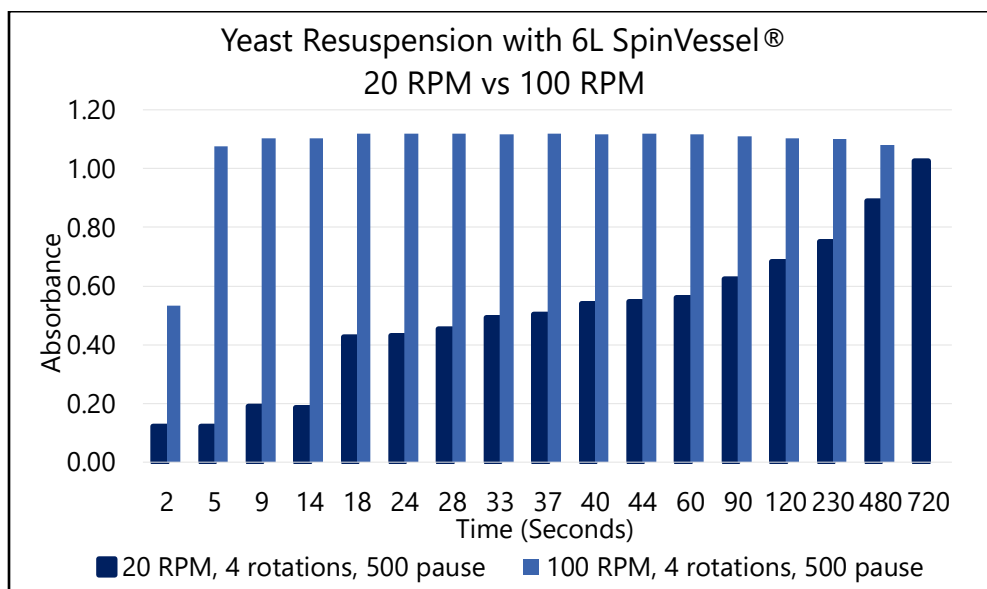
The following settings are ones to use when starting out with the VP 418MW2-2-50-L-CC or VP 418MW2-2-50HL-CC:

Speed: 500 RPM Rotate: 4.1 times Pause: 200 milliseconds

It is recommended to practice with water in the SpinVessel® to determine safe RPM, rotation and pause numbers before using expensive reagents.

The VP 418MW2-2-50-L-CC and VP 418MW2-2-50HL-CC MagWash® systems are designed to be used with VP 830SV-50 or VP 830SV-25 SpinVessels® tubes. Please contact V&P Scientific for pricing.

See below for an example of low versus high RPM for a solution of yeast cells in a large circumference, 6-liter SpinVessel®. Note that, when given a longer mixing time, even the slower speed (20 RPM for more gentle mixing) was able to suspend the yeast cells.



PRODUCT MAINTENANCE

GENERAL PRODUCT CARE

When not in use, turn the power switch off.

Do not place the control unit in chambers with temperatures above 40°C.

To clean the stirrer, wipe down with a cloth and mild detergent followed by a water wipe. **Do not immerse SpinVessel® Motor or Control in liquid.**

The motor of the MagWash® is a stepper motor, 100-240 Volts, 50/60 Hz, CE compliant

SAFETY PRECAUTIONS

The use of motor controls, like that of all utilization of concentrated power, is potentially hazardous. The degree of hazard can be greatly reduced by proper design, selection, installation, and use, but all hazards cannot be completely eliminated.

The following safety precautions must be observed during all phases of installation, operation, service, and repair of this motor control product. Failure to comply with these precautions or with specific warnings elsewhere in this manual violates safety standards of design, manufacture and intended use of the products. V&P Scientific assumes no liability for the customer's failure to comply with safety requirements and practices.

WARNING
To avoid personnel injury caused by electrical shock, do not remove the cover of the controller when the power is ON.
CAUTION
Do not disconnect motor during operation. Otherwise, over-current breakdown may result.

WARRANTY

V&P Scientific, Inc. warrants this product to be free from defects in material and workmanship when used under normal laboratory conditions for one year. This warranty begins from the date of delivery by V&P Scientific.

In the event this product fails under normal laboratory conditions within the specified period of time because of a defect in material or workmanship, V&P Scientific will, at its option, repair or replace the product. Damage to the product caused by user negligence is not covered.

This warranty is made in lieu of other warranties expressed or implied including the warranties of merchantability and fitness for a particular purpose. V&P Scientific shall not be liable for loss or damages arising from the use of these products nor for consequential damages of any kind.

Please keep the special shipping carton in case the unit needs to be shipped back to V&P Scientific. Contact V&P Scientific for return authorization and shipping instructions or for any other assistance at 858-455-0643 or sales@vp-sci.com.